

FUNDAMENTALS
and APPLICATIONS

LIGHT
MATTER
INTERACTIONS *for*

*biophysics
biomedicine
communications
sensors
devices*

WORKSHOP

PHOTONICS

Kopaonik, Serbia

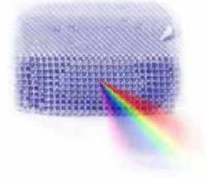
8.3.-12.3.2020.

Organizers

Sponsors



Institute of Physics Belgrade
University of Belgrade
Kopaonik, March 08-12, 2020



Book of Abstracts
13th Photonics Workshop
(Conference)



13th Photonics Workshop (2020)

Book of abstracts

Kopaonik, Serbia, March 08-12, 2020

Publisher, 2020:

Institute of Physics Belgrade

Pregrevica 118

11080 Belgrade, Serbia

Editors:

Dragan Lukić, Marina Lekić, Zoran Grujić

ISBN 978-86-82441-50-2

Printed by:

NEW IMAGE d.o.o.

Cara Dušana 212, Zemun, Belgrade

Number of copies: 60

CIP - Каталогизација у публикацији Народна библиотека Србије, Београд

535(048)
681.7(048)
66.017/.018(048)

PHOTONICS Workshop (13 ; 2020 ; Kopaonik)

Book of Abstracts / 13th Photonics Workshop, (Conference), Kopaonik, March 08-12, 2020 ; [editors Dragan Lukić, Marina Lekić, Zoran Grujić]. - Belgrade : Institute of Physics, 2020 (Belgrade : New image). - 58 str. : ilustr. ; 25 cm

Tiraž 60. - Registar.

ISBN 978-86-82441-50-2

а) Оптика -- Апстракти б) Оптиелектроника -- Апстракти в) Технички материјали
-- Апстракти

COBISS.SR-ID 283421708

Machine learning for laser induced fluorescence spectroscopy

D. Šević¹, M.S. Rabasović¹, J. Križan², S. Savić-Šević¹, M.D. Rabasović¹, M. G. Nikolic¹
and B. P. Marinkovic¹

(1) *Institute of Physics, University of Belgrade, Belgrade, Serbia*

(2) *AMI d.o.o., Ptuj, Slovenia*

Contact: Dragutin Sevic (sevic@ipb.ac.rs)

Abstract. Artificial Intelligence (AI) became the writing on the wall in regard the science and, evenmore, generally in human society. Machine learning (ML) algorithms build a mathematical model of analyzed data enabling the computer to make predictions or decisions. ML is considered as a subset of AI. Recently, we have started to follow this trend in scientific research by introducing application of ML for analysis of data obtained by laser induced fluorescence measurements. ML algorithms require large training sets; so we have decided to use, for our starting tests and exercises in ML, data obtained by our previous measurements of nanophosphor luminescence presented in [1-4]. Based on experiences of other authors [5] and references therein, where the beer luminescence was analyzed, we have selected to use ML implemented by the Solo software package (Version 8.8, Eigenvector Research Inc, USA).

Figure 1. shows principal component analysis of measurements of temperature dependence of Gd₂O₃:Er,Yb nano phosphor luminescence excited at 980 nm. It could be seen that measurement number 8 (luminescence at 660 K) strongly differs from measurements on other temperatures, so it should be discarded. The same conclusion was obtained from the classical analysis of the same data set, based on fitting error. However, in the case of very complex biomedical data, the classification is usually far from so simple; so the use of ML becomes crucial.

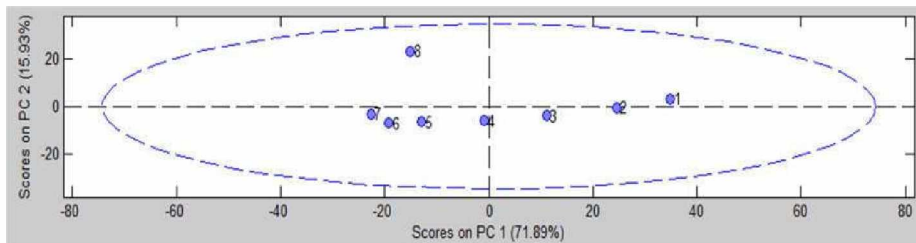


Figure 1. Scores on first two principal components of measurement data of temperature dependence of luminescence of Er and Yb doped Gd₂O₃ nanopowder.

REFERENCES

- [1] D. Sevic, M.S. Rabasovic, et al, *Materials Research Bulletin* **88** (2017) 121–126.
- [2] A. Vlasic, D. Šević, M.S. Rabasovic, et al, *Journal of Luminescence*, **199** (2018), 285-292.
- [3] D. Sevic, M. S. Rabasovic, et al, *J. Phys. D: Appl. Phys.* **53** (2020) 015106-1-10.
- [4] D. Sevic, M. S. Rabasovic, et al, submitted to *Opt. Quant. Electron.*
- [5] T. Dramicanin, I. Zekovic et al, *J. Fluoresc.* **29** (2019), 1103-1111.